



Community Advisory Group Meeting

March 24, 2021



Closed Captions in English and Spanish

English closed captions are available within Zoom and YouTube.

Users can follow this link to view both English and Spanish captions in a separate browser window:

<https://ibr.news/captions>

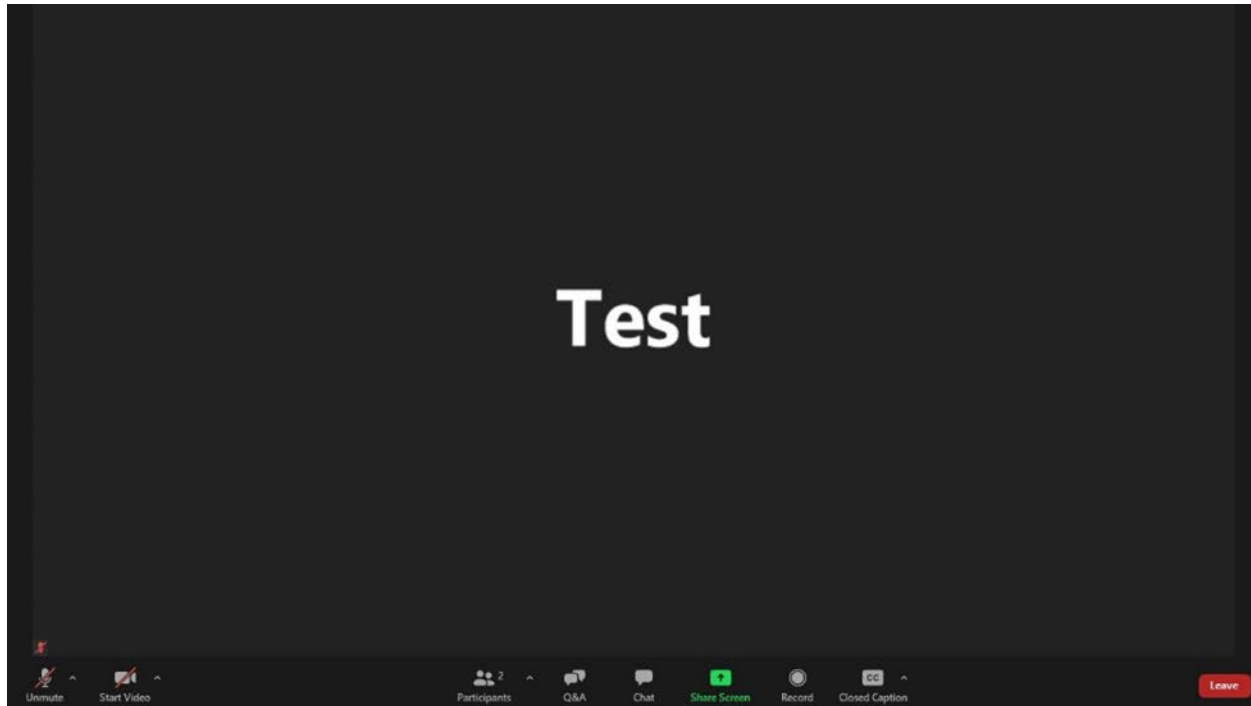
Subtítulos disponible en Inglés y Español

Los subtítulos en Inglés están disponibles en Zoom y YouTube.

Usuarios pueden seguir este enlace para ver los subtítulos en Inglés y Español en una ventana separada del navegador:

<https://ibr.news/captions>

How to access closed captions



1. At the bottom middle of your screen you should see a menu of options. If you can't see the menu, hover your mouse over the bottom middle of the screen.
2. Then click on the “CC” icon and a separate window with captions will appear.



Webinar Participation Tips

- ▶ Thank you for joining us today!
- ▶ Please join audio by either phone or computer, not both. We encourage panelists to turn on your video.
- ▶ Please keep your audio on mute when not speaking.
- ▶ If you experience technical difficulties, please contact program staff at:
(503) 897-9219

Public Input Instructions

- ▶ There will be an opportunity to provide brief public input later in the meeting today (around 5:45PM).
 - To dial in by phone use the following directions:
 - Dial: 1-669-900-6833
 - Meeting ID: 993 5459 6043 Passcode: 674942
 - Dial *9 to raise your hand; After you are invited to speak, dial *6 to unmute yourself.



Public Input Instructions

▶ To submit comment after the meeting:

- Fill out the comment form on the program website or email your comments to **info@interstatebridge.org** with “CAG Public Comment” in the subject line.
- Call **360-859-0494** (Washington), **503-897-9218** (Oregon), or **888-503-6735** (toll-free) and state "CAG Public Comment" in your message.
- Written comments need to explicitly say “**CAG Public Comment**” in the subject line or in the body of the message for them to be identified and distributed to CAG members.
- All written comments must be received prior to 48 hours in advance of each upcoming meeting in order to be distributed to advisory group members. Comments received after that point will be distributed to members in advance of their next meeting.



Meeting Agenda

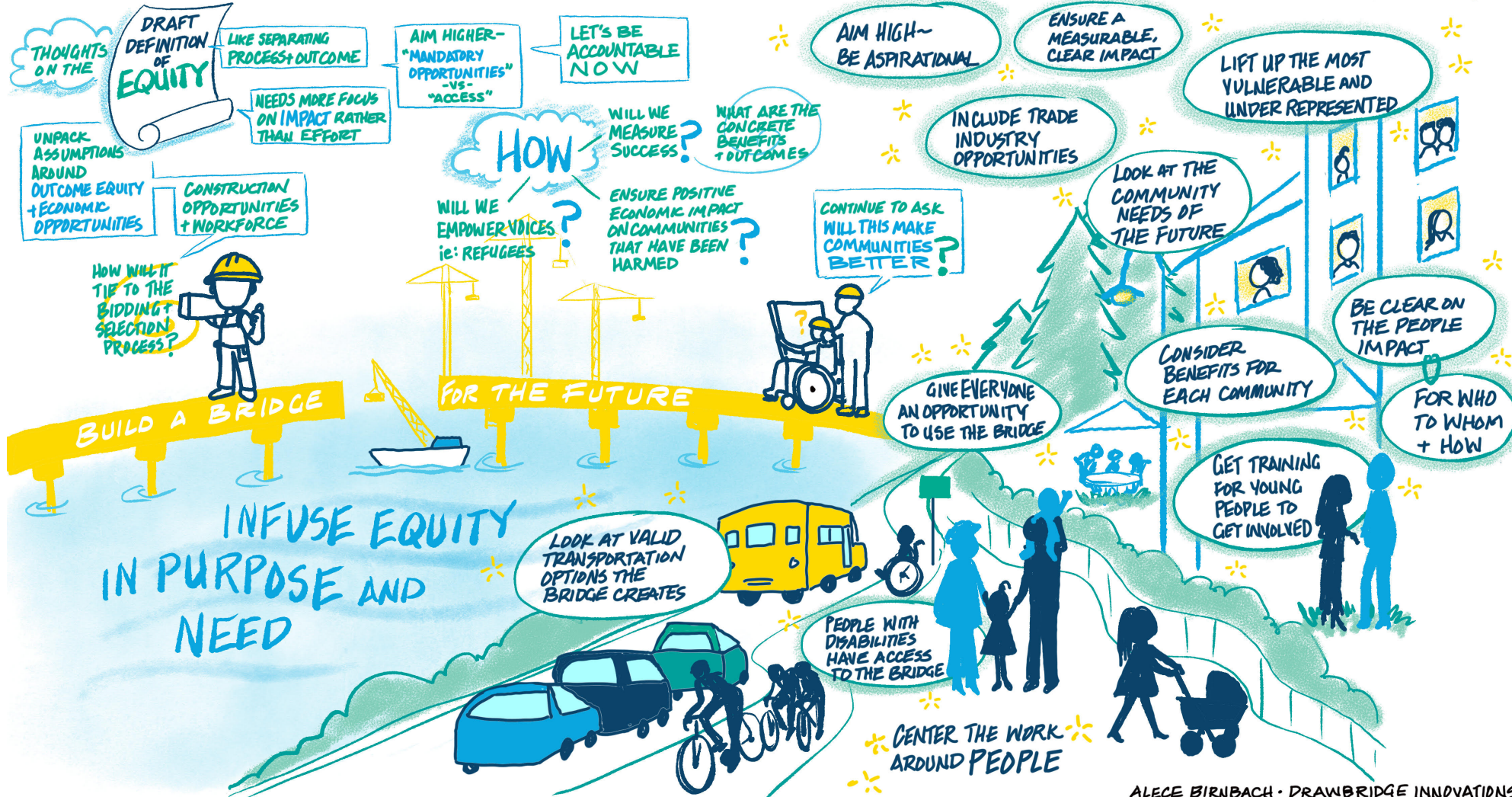
1. Welcome
2. Review + Discuss Draft Charter
3. Update on the Draft Purpose & Need Statement / Continue Discussion of Vision & Values
4. Public Comment
5. Wrap up

Equity Advisory Group (EAG) Update

▶ Next Meeting: March 29, 5:30 – 7:30 p.m.

MARCH 8 • 2021

EQUITY ADVISORY GROUP MEETING



Executive Steering Group Update

March 17 Meeting: Reviewed and provided feedback on the Draft Purpose and Need, Community Vision, Critical Objectives, and Values including initial summary of input received from Community engagement activities, and initial input from EAG and CAG.

- Emphasized the importance of including **Equity** and **Climate Change** in the draft language.
- Continued to work together to highlight **regional priorities** and address **constituent interests** in the working draft language.
- Voiced their appreciation for input from **CAG, EAG, and Community Engagement** and looked forward to seeing their continued feedback incorporated into the language.

Near-term Work: Strive for consensus recommendation on Purpose & Need, Vision & Values to share with Bi-State Legislative Committee.

Next meetings:

April 29, 8:00am – 10:00am

May 20, 10:00am – 1:00pm

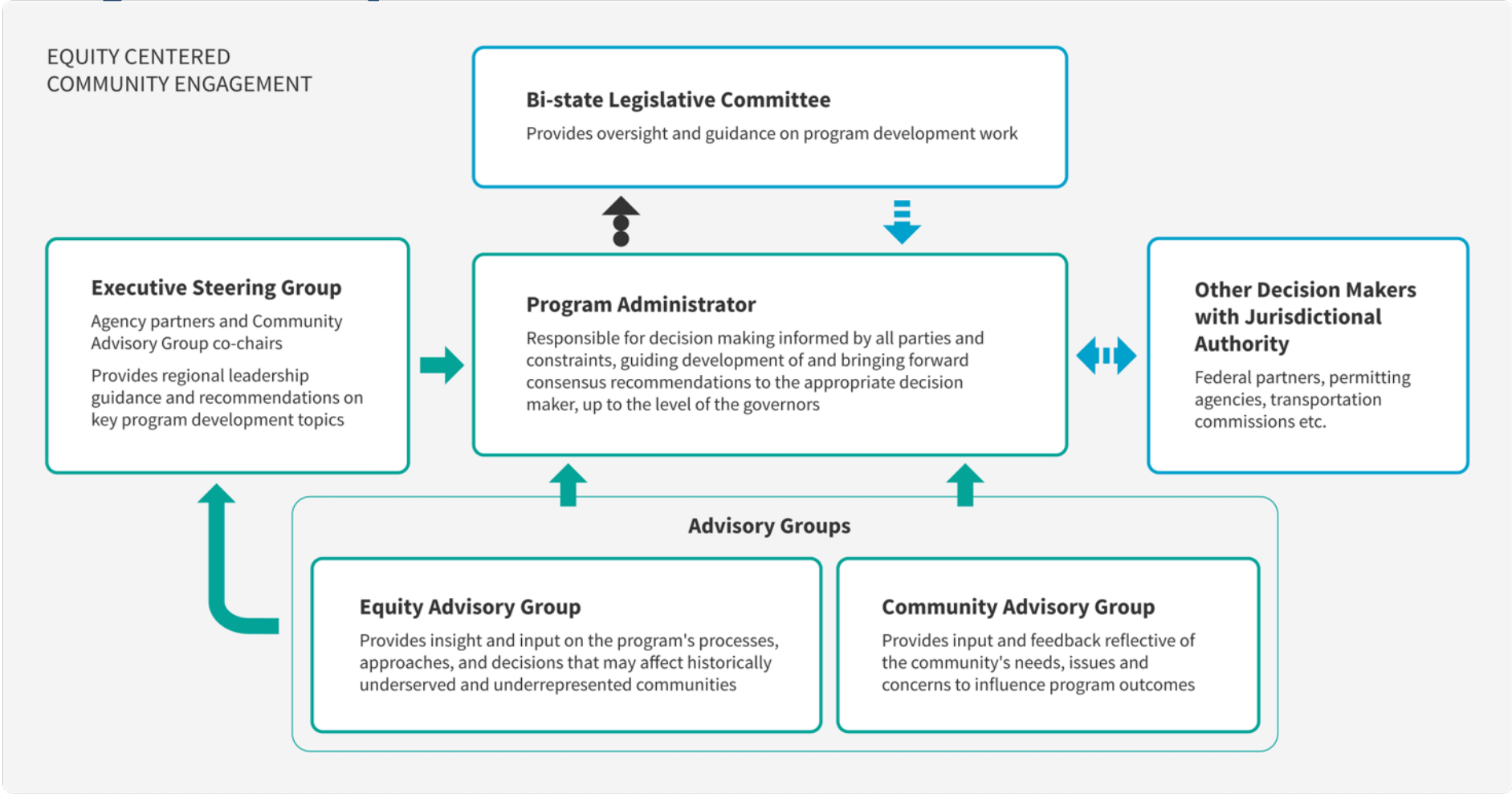


Community Advisory Group Draft Charter

Charter

- ▶ Purpose
- ▶ Structure
- ▶ Roles and Responsibilities
- ▶ Meetings
- ▶ Membership
- ▶ Our Shared Commitment

Advisory Groups



KEY: Recommendations Oversight/Guidance
 Regular briefings on program work and advisory group recommendations

NOTE: Location on graphic does not indicate hierarchy. This diagram is intended as a high-level overview and does not show all engagement points.

CAG Charter – Breakout Session

- ▶ Does the “Our Shared Commitment” section accurately represent the values of CAG?
- ▶ Is there anything missing in our charter?

Breakout Session

CAG members are currently in a breakout room. We will return for a report out shortly.



Group Report Out

Jamboard

Listening Sessions

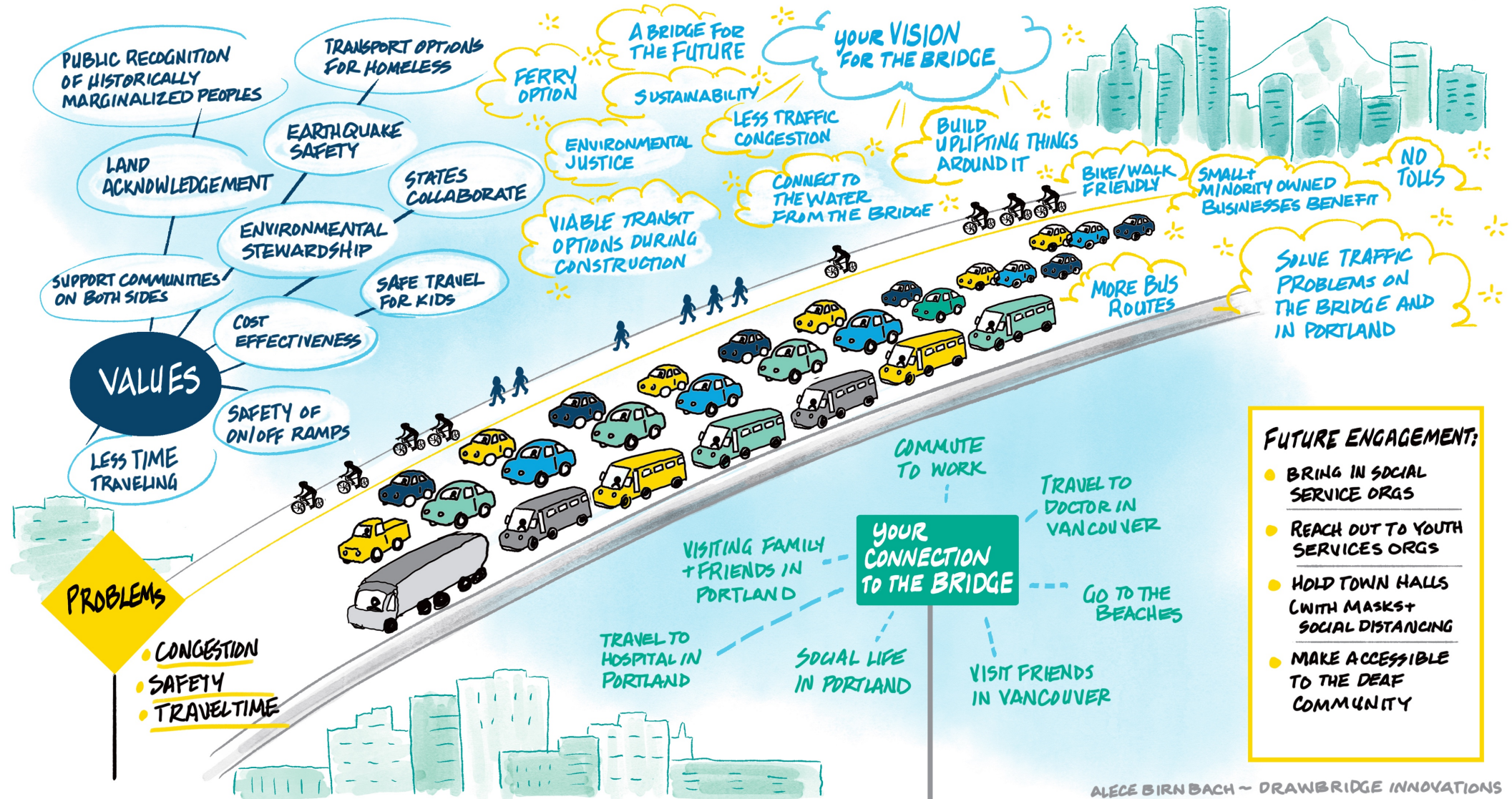
Elevating Voices of Equity + Youth

*This graphic reflects the conversations heard during two listening sessions with communities of concern held on March 11, 2021 and are not representative of future solutions

MARCH 11 • 2021



ELEVATING THE VOICES OF EQUITY



**This graphic reflects the conversations heard during two listening sessions with Youth (16 - 25) held on March 15, 2021 and are not representative of future solutions*

MARCH 15 • 2021



YOUTH LISTENING SESSION

OUR VISION

SUSTAINABILITY

WORKS FOR US + OUR GRAND CHILDREN

LET THIS BRIDGE BE A SYMBOL THAT WE ACTED ON CLIMATE CHANGE!

SAFETY

SAFE TO WALK, BIKE, + DRIVE

LONGEVITY

EARTHQUAKE SAFE

TRANSIT OPTIONS

CARS AREN'T THE ONLY OPTION

GOING BACK + FORTH EASILY IS GOOD FOR BUSINESS

RELIABLE COMMUTE TIMES

ELEVATE VOICES OF THOSE WHO ARE TRANSIT DEPENDENT

EQUITY

ACCESSIBLE TO ALL

COMMUNITY VOICES ARE HEARD

\$ COST TO BUILD + USE

PEOPLE CAN AFFORD TO COMMUTE

BIKE OR WALK ACROSS

CONNECTS PEOPLE TO NATURE AND EACH OTHER

LET'S MOVE FORWARD AS ONE REGION!

WALK OVER THE BRIDGE FROM THE WATER FRONT

IT WOULD BE GREAT IF IT ATTRACTS TOURISTS!

WE WANT TO FEEL PROUD OF OUR BRIDGE!

MODERNIZE IT!

NO BRIDGE LIFTS

HOW SHOULD WE ENGAGE WITH YOUTH?

- SCHOOL NEWSLETTERS
- TARGET ADS ON SOCIAL MEDIA
- INFOGRAPHICS
- STUDENT CLUBS
- UPWARD BOUND
- INVOLVE HIGH SCHOOLS
- ★ COMMUNICATE IN SPANISH TOO

Review CAG Feedback

CAG and EAG Feedback

Key Themes Discussed:

- ▶ Bi-state cooperation
- ▶ Congestion
- ▶ Community cohesion
- ▶ Community engagement
- ▶ Equity
- ▶ Freight
- ▶ Funding/Cost
- ▶ Modal Choice
- ▶ Pedestrian/Bicyclists
- ▶ Safety
- ▶ Seismic
- ▶ Sustainability/Environmental Impacts
- ▶ Transit
- ▶ Workforce

CAG and EAG Feedback

- ▶ **Overall** – definitions for terms like modal choice, travel reliability, etc.
- ▶ **Equity** – acknowledge the role equity plays in all values
- ▶ **Congestion** – recognize area's role in *regional congestion*; plan for *full life of bridge* (~100 years) and maximize how we move people and goods; address *bottlenecks* rather than move them
- ▶ **Funding and Cost Effectiveness** – address concepts of *affordability*; recognize future funding challenges in our financing (e.g., gas tax is declining); create something sustainable and *future-proof*

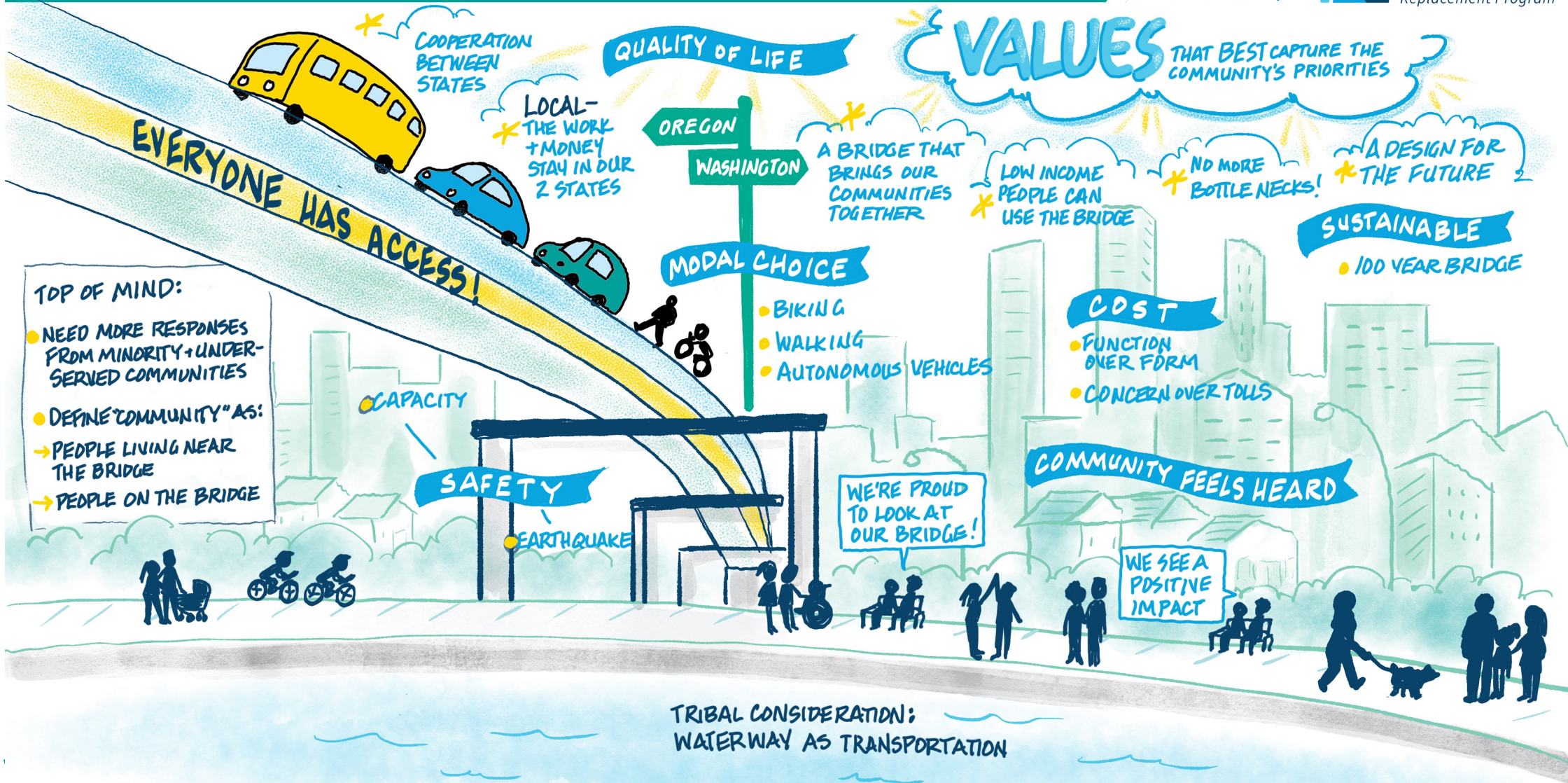
CAG and EAG Feedback

- ▶ **Quality of Life** – recognize/protect/enhance community connection and cohesion; invest in the community; provide *unencumbered access to the river*
- ▶ **Modal Choice** – include statement: remove *barriers to access*
- ▶ **Regional Economy** – improve our community by engaging local technical colleges/trade schools to create a well-trained workforce and stress *economic empowerment*; acknowledge I-5 is the heart of an interstate trade corridor
- ▶ **Safety** – anticipate future needs (autonomous vehicles) and program technical resilience into design; safety to avoid congestion
- ▶ **Bi-state and Local Cooperation** – create common voice with all partners in program to improve outcomes

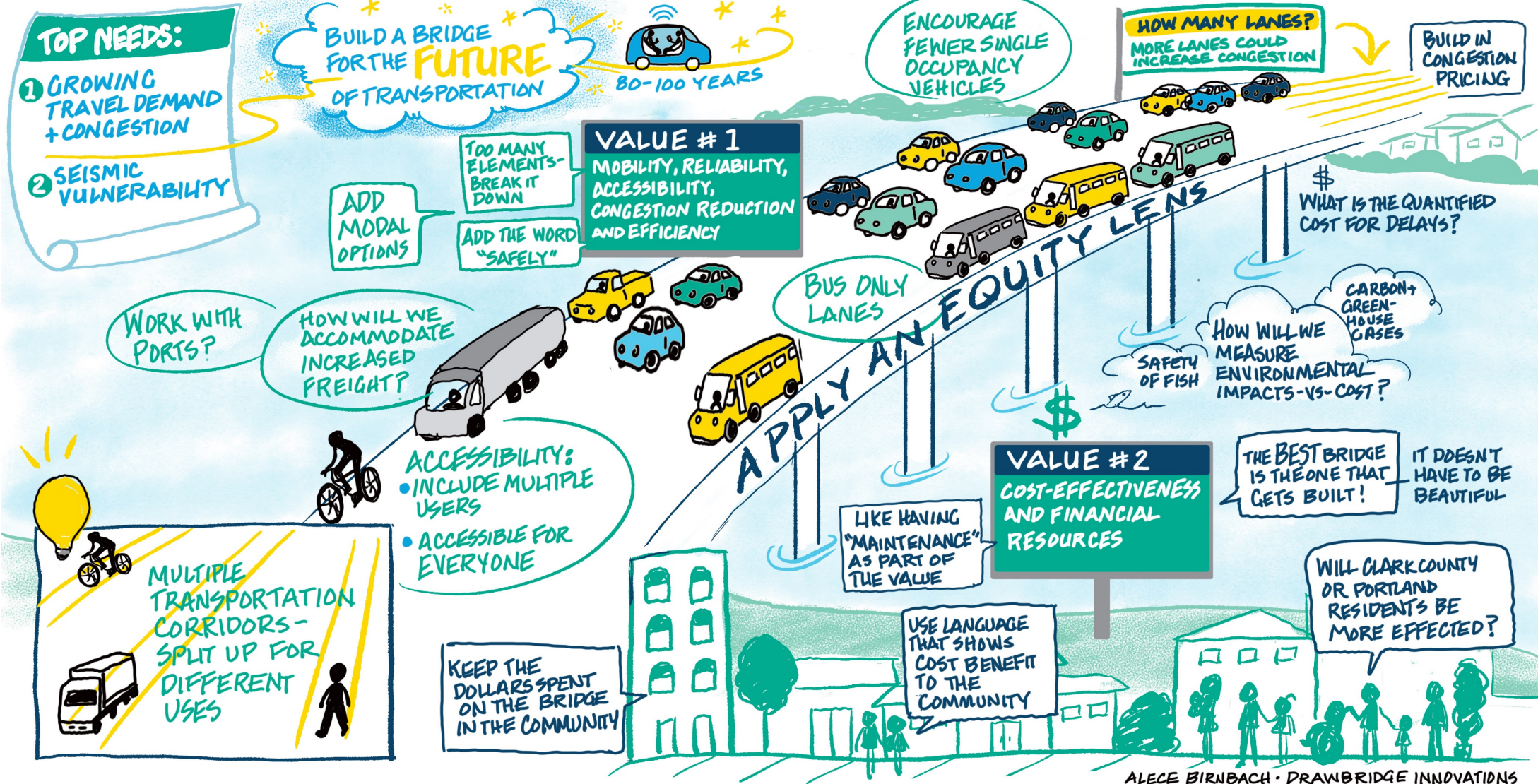
*This graphic reflects the conversation heard during the Community Advisory Group held on March 10, 2021 and are not representative of future solutions

MARCH 10 • 2021

COMMUNITY ADVISORY GROUP MEETING



COMMUNITY ADVISORY GROUP MEETING



ALECE BIRNBACH - DRAWBRIDGE INNOVATIONS



Draft Vision & Values Workshop

Reviewing Updates to Vision & Values

- ▶ **March 8 and March 10: Gathered feedback from EAG and CAG**
 - Critical Objectives: Equity and Climate Change
 - Community Vision and Values
- ▶ **March 18: Updated to incorporate your input**
- ▶ **Today: Review and make sure we captured your input**

Draft Critical Objective - Equity

- Commit to equity of both outcomes and processes throughout the delivery of the program.
- Ensure historically marginalized communities have meaningful access to program activities, jobs, and other program benefits for historically marginalized communities.
- Seek Minimize equitable distribution of transportation costs for historically marginalized communities associated with the program.
- ~~Strive to ensure~~Ensure access to program benefits while minimizing impacts to historically marginalized and underserved communities, including neighborhoods adjacent to the program area.
- Consider historical impacts to black, indigenous, and people of color (BIPOC) as well as economically vulnerable populations when determining equitable outcomes for the program.
- Engage historically marginalized communities to ensure program design reflects cultural context and area history.
- Provide meaningful opportunities for women and minority owned firms, including Disadvantaged Business Enterprises in all procurement.
- ~~Through design, m~~Minimize displacements within communities of concern through design.
- Enhance transportation and public transit access to jobs, services, affordable housing and housing choice relevant to historically marginalized communities.

<Add definition of “Process Equity” and “Outcome Equity” per EAG (pending)>

Updated Vision and Values

Mobility, travel reliability, and congestion reduction

- Recognize and plan for anticipated travel conditions over the lifespan of the bridge.
- Increase the capacity of the bi-state river crossing to move more goods and people on all modes.
- Provide more efficient mobility, while improving reliability and accessibility for all users.
- Explore congestion pricing tools combined with transit options to help manage travel demand and improve freight and person mobility.
- Provide an efficient transportation system that accommodates transportation system management with tools such as active traffic management, ramp metering, and incident management.
- Promote transportation demand management through increased transit and other strategies such as carpooling, vanpooling, commute trip reduction programs, and park and rides.
- Recognize the requirements of local, regional, and interstate movement.
- Address bottlenecks throughout the program area.
- Enhance the I-5 corridor as a global trade gateway by addressing the need to move freight efficiently and reliably through the program area, while allowing for river navigational needs.

“Mobility” refers to the ability to easily move between different locations.

“Travel reliability” refers to consistency or dependability in travel times, as measured from day-to-day and/or across different times of the day.

Updated Vision and Values

Modal choice

- Provide modal choice, including [highway motor vehicle](#), transit, high-capacity transit, and active transportation modes.
- [Improve local connectivity for all modes and connections to the regional system.](#)
- [Reduce barriers to accessing different modes.](#)

[“Modal” refers to the various methods \(or modes\) of transportation, such as motor vehicle, transit, walking, cycling, rolling, or other means.](#)

Safety

- Improve safety for all [users including vehicles, freight, transit users](#), and those who walk, bike, or roll.
- [Improve short-term and long-term resiliency of the bridge to a seismic event Provide a seismically resilient bridge, that is consistent with local, state, and federal policies promoting resiliency.](#)
- [Design smart roads to accommodate future technological advances \(e.g., autonomous vehicles, smart tolls\).](#)
- [Implement safety features to reduce congestion \(e.g., fewer crashes causing delays\).](#)

~~Regional economy~~ [Economic Empowerment](#)

- Support access to jobs for a sound regional economy and job growth.
- [Optimize opportunities for local job creation related to program materials and construction.](#)
- [Reinforce the program area’s role as part of an important interstate trade corridor.](#)

Updated Vision and Values

Funding and cost-effectiveness

- Ensure cost-effectiveness in design, construction, maintenance, and [long-term](#) operation.
- Ensure a reliable funding plan for the program, [recognizing future funding challenges](#).
- Ensure alignment with State and Federal funding programs to maximize funding.
- Ensure the ability of the program to be phased as needed.

Bi-state and local cooperation

- Foster regional cooperation and planning, [creating space for a common voice between the bi-state program partners to improve program outcomes](#).
- Support existing growth management plans.
- Support balanced job growth.
- Support alignment with partner agency policies to the extent practicable.

Community engagement

- Provide [ongoing](#) opportunities for meaningful, equitable and transparent community engagement.
- Focus on equity-centered engagement, including with communities of concern and historically marginalized communities.
- Incorporate community feedback to influence key decisions regarding the range of improvements, design, impacts to the community and environment, and mitigation strategies.

Other Critical Objective, Vision and Values

- ▶ **Based on feedback from EAG and CAG, the following were complete and didn't require changes:**
 - Critical Objective: Climate Change
 - Community Value: Quality of Life
 - Community Value: Environment

Vision & Values – Breakout Session

- ▶ Does the draft Vision & Values statement reflect the community's values?
- ▶ Is there anything missing?

Breakout Session

CAG members are currently in a breakout room. We will return for a report out shortly.

Group Report Out

Jamboard

What's Next

Community Outreach - Listening Sessions

- ▶ Multimodal Commuter
- ▶ Hayden Island
- ▶ Downtown Vancouver
- ▶ Active Transportation

At our next meeting – April 28, 2021

- ▶ Seek consensus on CAG Charter
- ▶ Review final Purpose & Need / Vision & Values
- ▶ Introduce next program phase



Public Comment

Comment Instructions

To make a verbal comment:

- ▶ To make a live comment via phone, dial: +1 669 900 6833 or +1 408 638 0968
 - ▶ Meeting ID: 993 5459 6043
 - ▶ Passcode: 674942
- ▶ Dial *9 to raise your hand
- ▶ The facilitator will call on participants to provide comment
- ▶ Dial *6 to unmute yourself
- ▶ Please provide your name and affiliation.
- ▶ 10-minute timeframe will be divided among the number of requested speakers.

If we run out of time and you have not had a chance to speak, you can still provide comments after the meeting.



Comment Instructions

To submit comment after the meeting:



- ▶ Fill out the comment form on the program website or email your comments to info@interstatebridge.org with “CAG Public Comment” in the subject line.



- ▶ Call **360-859-0494** (Washington), **503-897-9218** (Oregon), **888-503-6735** (toll-free) and state "CAG Public Comment" in your message.
- ▶ Written comments need to explicitly say “**CAG Public Comment**” in the subject line or in the body of the message for them to be identified and distributed to CAG members.
- ▶ All written comments must be received prior to 48 hours in advance of each upcoming meeting in order to be distributed to advisory group members. Comments received after that point will be distributed to members in advance of their next meeting.

Wrap up

- CAG Meeting, April 28, 4:00 – 6:00 p.m.
- CAG Meeting, May – TBD
- CAG Meeting, June - TBD



Thank you!

